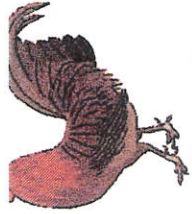
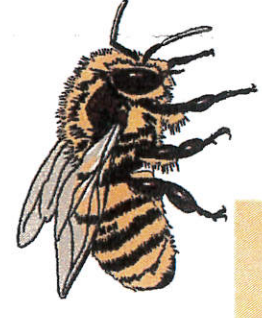
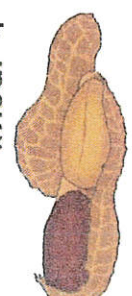
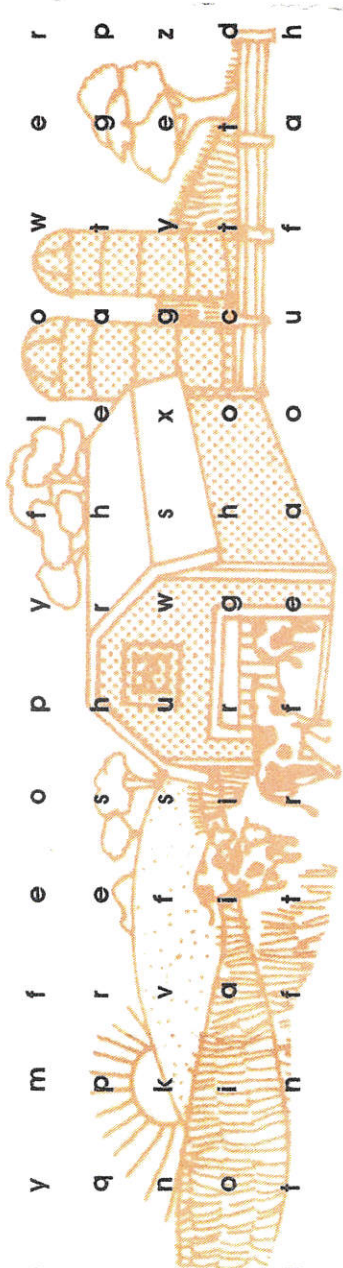


PLAYTIME

Terry likes to solve word puzzles after school. Circle the following types of farms. They may go across, down, diagonally and backwards.



FARMS: apple m d g r a i n b e e t t l e
 beef c a m a l l b e e s a b c d
 tree t u r f i p o u l t r y e h f e e g
 turkey a r u l b h i r r j k l e v m
 vegetable n e y m f e o p Y l o w e r
 cattle chicken e s q p r e s h u w r t g p
 horse berry bee s canesugar flower fruit corn cotton dairy a fish
 llama r t g h i d j t k r g l b e
 maplesugarbush o p w q r s r k t b u l s
 goat n c c h i y z y e a r c d s o
 grain hog pumpkin sheep peanut potato poultry wheat q z n t u n a e p o t a t o



Can you answer these questions?

Which types of farms grow food to eat? _____

Which type of farms grow crops which are used in clothing, lawns and building materials? _____